



Top Fill CoolMist

Ultrasonic Humidifier

Use and Care Manual

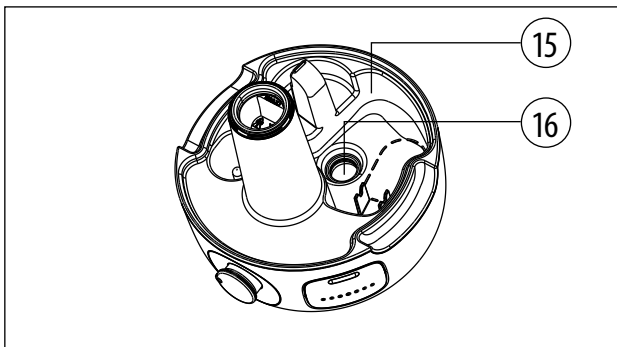
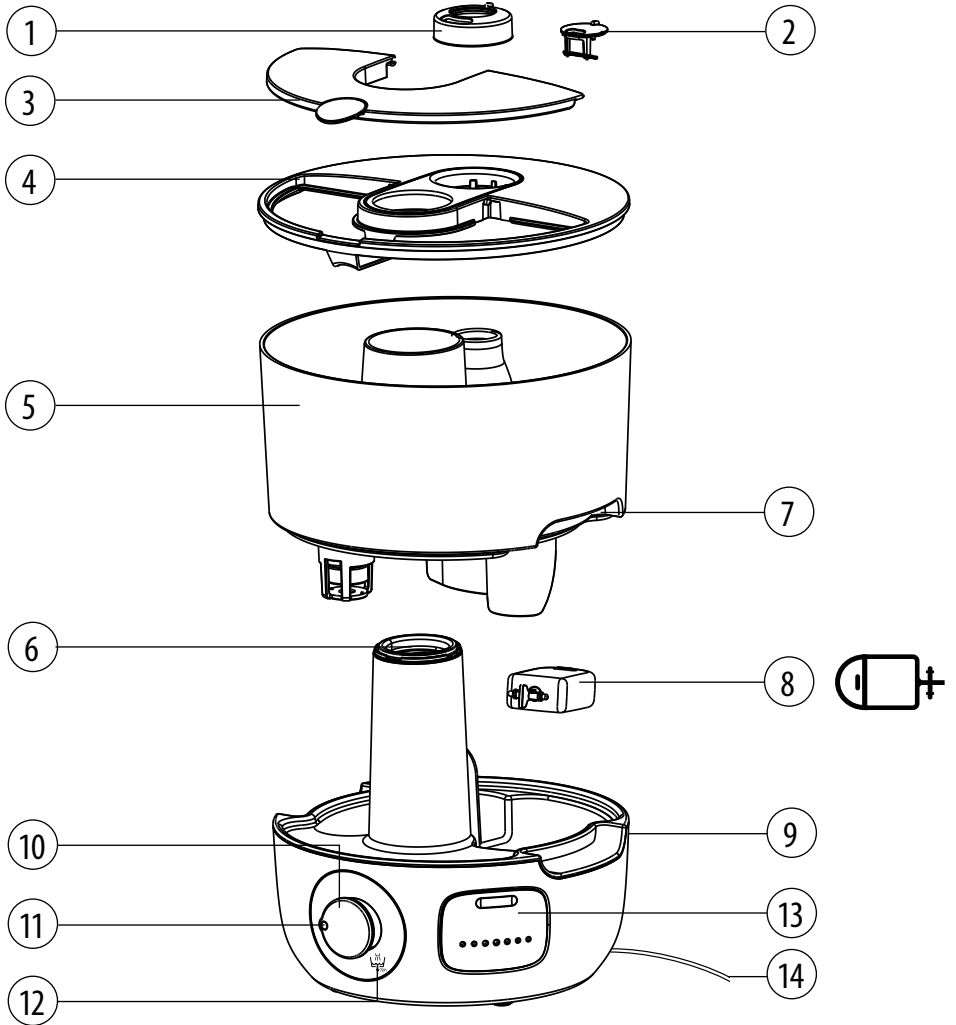


- ♥ Perfect for home environment use
- ♥ Easier breathing and a comfortable sleep

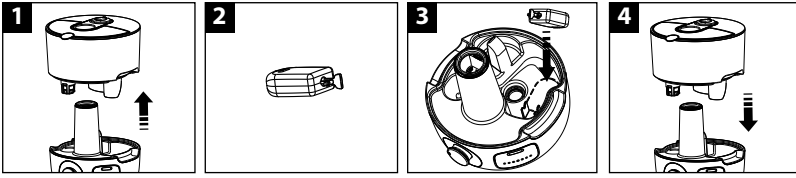
IMPORTANT!

READ AND SAVE THESE INSTRUCTIONS

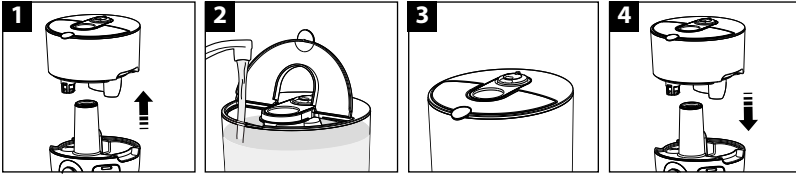
VUL585WAU



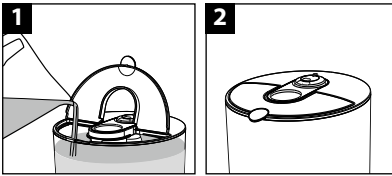
A)



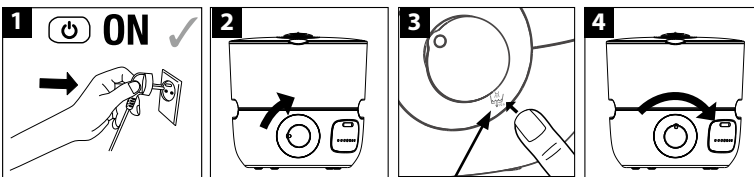
B.1)



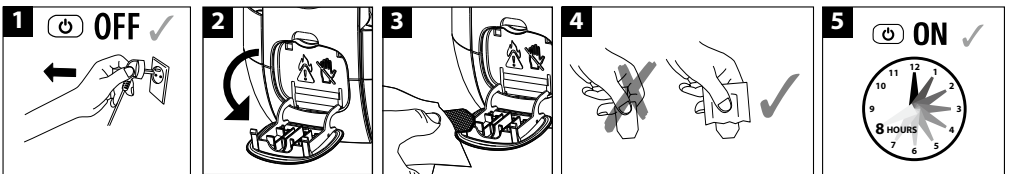
B.2)



C)



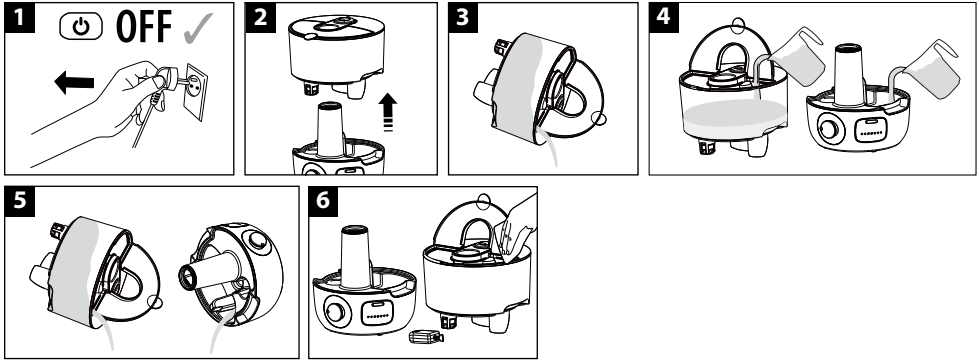
D)



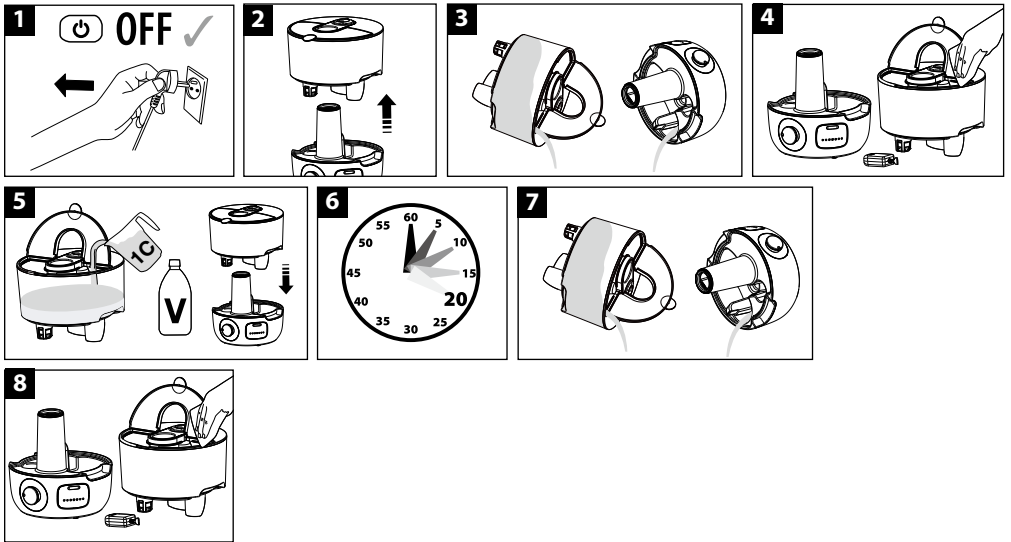
E)



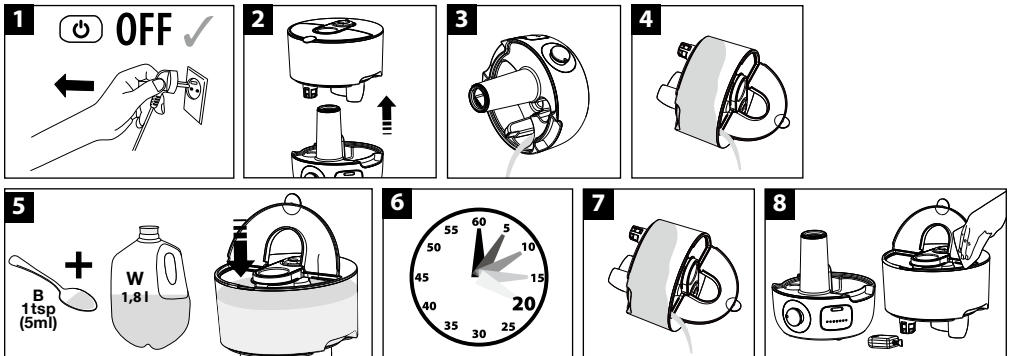
F)



G)



H)



IMPORTANT SAFETY INSTRUCTIONS



Read through all the instructions before starting to use the appliance. Keep this manual in a safe place for future reference.

These instructions are also available on our website.

WARNING:



- DO NOT** add essential oils or inhalant to the tank as these will damage the unit and void the warranty. For use with Vicks VapoPads. Essential oils or inhalants can be used in the Inhalant Cup only.
- Unplug the appliance during filling and cleaning.
- Read all instructions before using this humidifier.
- Always place this humidifier on a firm, flat and level surface. This humidifier may not work properly on an uneven surface.
- Place this humidifier in an area where it is not accessible to children.
- DO NOT** place the humidifier near any heat sources such as stoves, radiators, and heaters.
- DO NOT** use the humidifier outdoors.
- If the supply cord is damaged, it must be replaced by the manufacturer, its service agent or similarly qualified persons in order to avoid a hazard.
- This appliance is not intended for use by persons (including children) with reduced physical, sensory or mental capabilities, or lack of experience and knowledge, unless they have been given supervision or instruction concerning use of the appliance by a person responsible for their safety. Children should be supervised to ensure that they do not play with the appliance. Cleaning and user maintenance shall not be made by children without supervision.
- To disconnect the humidifier, first turn controls to the OFF position, then grip the plug and pull it from the wall outlet. **NEVER** pull by the cord.
- NEVER** tilt or attempt to move the humidifier while it is operating or filled with water. **UNPLUG** the humidifier before moving.
- This humidifier requires regular cleaning. Refer to the **CLEANING** instructions provided. **NEVER** clean the humidifier in any manner other than as instructed in this manual.
- DO NOT** direct moisture flow directly at individuals, walls or furniture.
- When a humidifier is used in a closed room or small rooms, check periodically for proper ventilation, as excessive humidity can cause personal injury or property damage.
- Turn the humidifier OFF if you notice moisture on the inside of your windows. For proper humidity reading use a hygrometer, which is available in many hardware and department stores, or by ordering one from the manufacturer.
- DO NOT** place the product directly on wood furniture or other surfaces that could be damaged by water or liquids. The manufacturer will not accept responsibility for property damage caused by spillage or leaking.
- Micro-organisms that may be present in the water or in the environment where the appliance is used or stored, can grow in the water reservoir and be blown in the air causing very serious health risks when the water is not renewed and the tank is not cleaned properly every 3 days.
- Be aware that high humidity levels may encourage the growth of biological organisms in the environment.
- DO NOT** permit the area around the humidifier to become damp or wet. If dampness occurs, turn the output of the humidifier down or off. If the humidifier output volume cannot be turned down, use the humidifier intermittently. **DO NOT** allow absorbent materials, such as carpeting, curtains, drapes, or tablecloths, to become damp.
- NEVER** leave water in the reservoir when the appliance is not in use.
- Empty and clean the humidifier before storage. Clean the humidifier before next use.

- This appliance must only be used with the power supply unit provided with the appliance.
- The appliance is only to be used with the recommended vaporizing medium. The use of other substances may give rise to a toxic or fire risk.

COMPONENTS (See page 1)

1. 180° Outer mist nozzle
2. Inner nozzle
3. Lid flap
4. Lid
5. Water tank
6. Inhalant cup
7. Carrying handles
8. Float paddle
9. Base
10. Power switch and intensity control
11. Pilot light
12. Cleaning indicator
13. VapoPad door
14. Power cord
15. Water reservoir
16. Nebulizer



CHOKING HAZARD - May contain small detachable parts. Keep out of reach of children under 3 years old.

FIRST TIME OF USE

Before using the unit for the first time, you should note the following points:

- Remove all packing material from the unit
- Locate Float Paddle and set aside. DO NOT discard. This is required for operation. Keep instructions.
- It is recommended that you disinfect your humidifier prior to first use. See cleaning Instructions.
- Select a firm, level location at least 15cm from any walls for proper airflow.
- Place the humidifier on a water resistant surface.

OPERATING INSTRUCTIONS

FLOAT PADDLE INSTALLATION (See appendix A on page 2)

This humidifier uses a float system to regulate the water flow from the Tank to the Reservoir/Base.

The Float Paddle must be properly placed for the unit to operate.

The Float Paddle is designed to be easy to set up. The Float Paddle will only function as intended in one orientation

CAUTION: Improper placement of the Float Paddle could result in leaking or water not feeding to the Reservoir.

- Remove Water Tank (1).
- Line up Float Paddle with the dashed line float paddle shape on the bottom of the Reservoir. It only fits one way (2). Place

paddle over brackets. It does NOT snap in, rather simply sets in place (3). The paddle can be gently placed in the brackets.

- Replace Water Tank in Base (4).

FILLING (See appendix B on page 2)

There are two options for filling the humidifier's Water Tank: under the faucet at the sink, or with a pitcher of water at the humidifier.

If filling at the sink (B.1):

- Remove the Water Tank using handles on the sides of the Base (1), carry to sink and fill (2).
- Close the Water Tank lid (3).
- Carry the full Water Tank back using two hands and position it back on Base (4), some water will empty into the Base.

If filling at the humidifier (B.2):

- Ensure Tank is securely seated on Base.
- Open Tank lid and fill using a water pitcher with clean, cool, tap water (1), some water will empty into the Base.
- Close the Tank lid (2).

NOTE: When carrying the filled Water Tank, please use both hands for additional support.

- Once the filled tank has been positioned, do not attempt to move the humidifier. If it has to be moved, unplug the humidifier and remove the Water Tank first.

NOTE: Everytime you switch the device on or every 3 days when the sound and light go on, press the indicator to acknowledge that the water tank has been cleaned. The 3 days reminder to clean the device will then reset.

POWER (See appendix C on page 2)

CAUTION: DO NOT PLUG IN THE HUMIDIFIER WITH WET HANDS AS AN ELECTRICAL SHOCK COULD OCCUR.

- With the power switch in the OFF position, plug the filled humidifier into an outlet (1).
- Turn the Power Switch clockwise to the on position. The pilot light will illuminate (2).
- The Cleaning indicator and sound will go on when you switch the device on. Press the cleaning button to acknowledge that the water tank is cleaned (3), the sound and light to clean will turn off .
- Set your desired output by turning the knob clockwise. To operate on HIGH, turn the dial to the end (4).
- When a comfortable humidity level is reached turn Power Switch to a lower setting. A comfortable humidity level is between 40-60%. To monitor your humidity level use a hygrometer.
- The unit will shut off when it is out of water. Cleaning affects the time it takes for the auto shut-off to work.

When dirty – time delay for auto shut-off takes longer

When clean – works appropriately.

- Turn the humidifier off before removing and refilling the Water Tank. When the Water Tank is empty and the water level in the base gets too low, the fan and nebulizer turn off.

VAPOPAD HEATER DIRECTIONS FOR USE (see appendix D on page 2)

- Turn off and unplug your humidifier (1).
- Open VapoPad door located next to the power switch (2).
- Insert VapoPad all the way in with angled end facing towards the product in the slot (3). Be careful not to touch the VapoPad with your hands (4). If your hands do come in contact with the pad, wash them thoroughly, as essential oils can be irritant to the skin.
- Close the door, plug the unit back in and turn it on (5).

Note: As long as your humidifier is on, the VapoPad heater will also be activated. This area can be warm to the touch. NEVER add essential oils or VapoPads directly into the water tank as this can result in degradation to the material.

UFI: AD10-80UX-M008-EGSE



WARNING:

Pad may present a choking hazard. Keep out of reach of children and pets. H317 May cause an allergic skin reaction. P102 Keep out of reach of children. P302 + P352 IF ON SKIN: wash with plenty of soap and water. P333 + P313 If skin irritation or rash occurs: Get medical advice / attention. P501 Dispose of contents and container to an approved waste disposal plant.

Hazardous ingredients: Eucalyptus Oil, Cedar leaf oil.

2 menthol VapoPads included.

Recommended Usage for the Vicks Menthol VapoPads (VSP-19):

- Not recommended for infants under 10lbs (4.5 kgs).
- For children between 10-22 lbs (4.5-10 kgs) do not use more than 2 pads in a 24 hour period.

VapoPad Ingredients: Eucalyptus Oil, Menthol, Glycol, Cedar Leaf Oil & Others.

INHALANT CUP DIRECTIONS FOR USE (see appendix E on page 2)

This humidifier features an Inhalant Cup that can be used with your favourite essential oil or liquid inhalant for added enjoyment. The cup is heated to help evaporate the oil. This is not a diffuser – the oil does not meet the water but is passively evaporated into the air. Essential oil and inhalant are not included.

- Turn off and unplug your humidifier (1).
- Add a few drops of essential oil to the Inhalant Cup (2).
- Plug the unit back in and turn it on.
- To clean the Inhalant Cup wait 5 minutes after turning the unit off. Then gently wipe residue from the cup with a soft cloth (3).

DO NOT fill beyond the MAX level line molded on the inside. ONLY pour inhalant into Inhalant Cup.

WARNING: DO NOT ADD ESSENTIAL OILS, LIQUID INHALANTS OR ANY ADDITIVES TO THE WATER. DOING SO CAN DAMAGE THE HUMIDIFIER AND VOID THE WARRANTY.

If using Inhalant cup, keep out of reach of children to ensure

children cannot access inhalant or essential oils.

Water Quality and Your Humidifier

High mineral content in your water, also known as “hard water” may cause a white mineral residue to accumulate on surfaces in the room near the humidifier. This mineral residue is commonly referred to as scale (mineral build up). The higher the mineral content or hardness of your water, the greater the potential that you may have scale (mineral build up). Scale (mineral build up) is not a result of a defect or flaw in the humidifier. It is a result of the amount of minerals suspended in the water you are using. If you live in a hard water area, the use of distilled water will minimise the production of scale (mineral build up).

CARE AND CLEANING INSTRUCTIONS

EVERY 3 DAYS CLEANING (See appendix F on page 3)

- Each time the device is switched on or every 3 days, the cleaning feature will illuminate and beep every 5 seconds to remind the user of the required cleaning. Press the cleaning indicator to acknowledge that the water tank is cleaned, the reminder to clean the device will reset. The light and the beep sound will turn off. If you do not acknowledge your cleaning, the light will stay on and the beep will sound every 5 seconds until the cleaning indicator is pressed, whilst the unit will operate normally.
- Disconnect from the mains before cleaning (1).
- Every third day, lift the Water Tank from the Base (2) and empty all water from the reservoir (3). Before refilling, clean it with fresh tap water or cleaning agents if required (4). Remove any scale, deposits, or film that has formed on the sides of the tank or on interior surfaces (5), and wipe all surfaces dry (6).
- **DO NOT** leave water in the Water Tank or reservoir when the unit is not in use as it may result in the buildup of mineral deposits and bacteria that can inhibit the output efficiency of the humidifier. Please note that if water remains in the Water Tank for more than a day or two, bacteria growth is possible.
- Remove the Float Paddle from the Reservoir and set aside.
- Wipe Float Paddle and Reservoir area with a soft cloth to remove loosened minerals. If mineral build up is stubborn on the nebulizer, scrub with a soft tooth brush.
NOTE: Nebulizer is fragile. **DO NOT** apply extreme pressure.
- Place Float Paddle back in Reservoir. Position in place. For detailed instructions, refer to the Float Paddle Installation section (see Appendix A on page 2).
- To fill and power ON, refer to Operating Instructions (see Appendix B and C on page 2).

WEEKLY SCALE REMOVAL (See appendix G on page 3)

- Disconnect from the mains before cleaning (1).
- Lift the Water Tank from the Base (2) and empty all water from the reservoir (3). Drain any water from the Water Tank. Wipe it clean with a soft, damp cloth. Rinse the Water Tank with lukewarm water after each use (4).
- Add 0.5 litre of undiluted distilled white vinegar to Water Tank. Close the lid and swish vinegar solution around in Tank. Place Tank on Base. Vinegar solution will drain into

Water Reservoir and loosen mineral buildup (scale) on Nebulizer and Float as they soak in the solution. It will also loosen scale on bottom of Water Tank (5).

- Soak for 15-20 minutes (6).
- After soaking, open the lid and pour solution out in sink. Pour solution from Water Reservoir out in sink (7).
- Wipe Nebulizer and Float with soft cloth to remove loosened mineral deposits (8).
- Rinse Water Reservoir and Water Tank until smell of vinegar is gone. Make sure water does not enter the fan opening (vented opening in back of base) or Power Switch.
- **DO NOT** immerse the Base in water. Gently wipe the reservoir with a soft, clean, wet cloth.
- **DO NOT** use detergent to clean any water-containing parts of the humidifier. Detergents and the film they leave behind can affect the output of the humidifier. **DO NOT** use abrasive cleansers or brushes.
- To fill and power ON, refer to Operating Instructions (see Appendix B and C on page 2).

WEEKLY DISINFECTING (See appendix H on page 3)

- Disconnect from the mains before cleaning (1).
- Lift the Water Tank from the Base (2) and empty all water from the reservoir (3). Open the lid and drain any water from the Water Tank (4).
- If accessories are installed, remove accessories and set aside. **DO NOT** clean accessories. This will damage the accessories.
- Thoroughly clean humidifier every week using a solution of bleach and water (5ml of bleach in 1.8 liters of water). Fill the water tank partially with this solution (5).
- Let stand twenty (20) minutes (6), shaking vigorously every few minutes. Drain and rinse with clean water until the bleach smell is gone (7).
- Wipe the reservoir with a soft cloth dampened in the solution. Rinse area thoroughly before proceeding (8).
- If mineral deposits are evident around the Nebulizer, clean the surface with a soft, clean cloth and a small amount of undiluted white vinegar. If necessary for removal of mineral deposits, mix a solution of 50% white vinegar and 50% water and fill the Base with enough solution to cover the Nebulizer. Rinse out the reservoir and wipe clean.
Do not touch Nebulizer or the Water Sensor with bare fingers as any fingerprints or residue can reduce mist output. Do not immerse the Base in water.
- To fill and power ON, refer to Operating Instructions (see Appendix B and C on page 2).

STORAGE

Follow cleaning instructions and dry product thoroughly.

DISPOSAL



This appliance complies with EU legislation 2012/19/EU on end of life recycling. Products showing the 'Crossed Through' wheeled bin symbol on either the rating label, gift box or instructions must be recycled separately from household waste at the end of their useful life.

Please **DO NOT** dispose of appliance in normal household waste. Your local appliance retailer may operate a 'take-back'

scheme when you are ready to purchase a replacement product, alternatively contact your local government authority for further help and advice on where to take your appliance for recycling.

GUARANTEE

Please read all instructions before attempting to use this device. Please retain the receipt as proof of and date of purchase. The receipt must be presented when making any claim within the relevant guarantee period. Any claim under the guarantee will not be valid without a proof of purchase.

Your device is guaranteed for two Years (2 Years) from date of purchase.

This guarantee covers defects in materials or workmanship that occur under normal use; defective devices meeting these criteria will be replaced free of charge.

The guarantee DOES NOT cover defects or damage resulting from abuse or failure to follow the user instructions. The guarantee becomes void if the device is opened, tampered with or used with other parts or accessories, or if repairs are undertaken by unauthorised persons.

Accessories and consumables are excluded from any warranty.

For support requests, find service contact information at the end of this owner's manual.

CONDITION OF SALE

As a condition of sale, the purchaser assumes responsibility for the proper use and care of this appliance in accordance with these printed instructions. The purchaser or user must judge himself or herself when to use the appliance and the length or use.

NOTE: IF YOU EXPERIENCE A PROBLEM WITH YOUR HUMIDIFIER PLEASE SEE WARRANTY FOR INSTRUCTIONS. PLEASE DO NOT ATTEMPT TO REPAIR THE HUMIDIFIER YOURSELF. DOING SO WILL VOID THE WARRANTY AND COULD CAUSE DAMAGE OR PERSONAL INJURY.

This product carries the CE mark and is manufactured in conformity with the Electromagnetic Directive 2014/30/EU, the Low Voltage Directive 2014/35/EU, the RoHS Directive 2011/65/EU and the Energy Using Products Directive 2009/125/EC.

Technical specifications are subject to change.

VUL585WAU

230-240V~ 50-60Hz 25W

Adaptor input: 230-240V~ 50-60Hz

Adaptor Output: 24V, 1.2A

Warranty

This product has been produced with the greatest care for normal, household use. Following directions carefully will ensure dependable operation. If your Vicks Humidifier is found to be defective (other than through misuse), we will repair or replace it at no charge during the 2 year warranty period. Modification to the product by the consumer is not authorised and voids the warranty. If you experience unsatisfactory operation, please contact Felton Grimwade & Bosisto's as per below. If repair is required under the warranty period, the product should be returned with proof of purchase to Felton Grimwade & Bosisto's service centre.

The purchaser assumes responsibility for the proper care and use of the product in accordance with the printed operating manual. The purchaser or user must make his or her judgment as to when to use the product and the length of use. Keep the operation manual available as it is your guide to safe, efficient operation. Our goods come with guarantees that cannot be excluded under the Australian Consumer Law.

You are entitled to a replacement or refund for a major failure and for compensation for any other reasonably foreseeable loss or damage. You are also entitled to have the goods repaired or replaced if the goods fail to be of acceptable quality and the failure does not amount to a major failure.

TROUBLE SHOOTING

PROBLEM	POSSIBLE CAUSE	CORRECTIVE ACTION
Power Switch is set to "On" and Power Light is off	Unit not plugged in	Plug unit in.
	No power at outlet	Check circuits, fuses, try a different outlet.
Little or no mist is produced	No water in tank	Fill Water Tank.
	Unit is not level	Place on a level surface.
	Mineral deposits on Nebulizer	Clean Nebulizer per instructions.
	Water Tank was washed with detergent	Rinse thoroughly with clean water. Wipe dry.
	Water level too low	Add water to Water Tank.
	Nebulizer or fan not functioning	See Guarantee.
Condensation forms around humidifier or windows	Mist intensity is set too high for room size or preexisting humidity level	Reduce output level or shut off humidifier.
Mineral residue ("White Dust") Accumulation	Hard water used	Use distilled water.
The Cleaning indicator and sound are always on	It is normal for the sound and light to activate every time the unit is powered to indicate that the humidifier must be regularly cleaned	Following the guidance in the owner manual, please undertake thorough cleaning every 3 days, press the cleaning button to clear the notifications.
The paddle does not fit	Wrong placement	Line up Float Paddle with the dotted-line float paddle shape on the bottom of the Reservoir. It only fits one way. Place Float Rod over both Brackets. It does NOT snap in, rather is simply set in place.

PERFORMANCE SPECIFICATION

Tank capacity (litre) : 2.2L

Duration - Full tank at minimum setting (hour): 24h

Ideal for Rooms (square meter): 35m²



Clean the water tank every three days

© 2023, All rights reserved.

**Helen
of Troy**

Helen of Troy Macao Limited
Avenida Xian Xing Hai No.105, Centro Golden Dragon, 14 andar
H,J,J,K, Macau

Distributed by:
Felton Grimwade & Bosisto's Pty. Ltd.
61-81 Clarinda Road (PO Box 74),
Oakleigh South, Victoria 3167, Australia

Customer service:
Free call: 1800 655 841
Website: www.fgb.com.au



Certain trademarks used under license from The Procter & Gamble Company or its affiliates.



PAP
Made and Printed
in China

P/N: A008685R1
22SEP23

Vicks

Humidifier

VUL585WAUArtwork Part #: **A008685R1**Dieline Part #: **NA**Subject: **Owner's Manual**Region: **AP-AU**Flat Size: MM: **W296 x H210**Folded Size: MM: **W148 x H210**Scale: **1/1**Material: **50# matte text**Page Count: **12**Revision: **1**Date: **22SEP23**Release Date: **22SEP23**

Re-Release Date:

ColorsCyan
0%Magenta
0%Yellow
0%Black (K)
100%**Spot Colors**PMS
0000PMS
0000PMS
0000

Dielines do not print

Coating: **NA**Bindery: **Saddle Stitch**

Special Instructions:

Quality Requirement of Artwork
Clarification Process of Artwork Printing:
Meet Eng-QS-06&02

Helen of Troy Creative Services
Marlborough, MA 01752 USA
Questions? Contact your representative